



Goodfellows
estate agents.com

48
Westgarth
Newcastle upon
Tyne
NE5 4PB

48 Westgarth
Whorlton Grange
Newcastle upon Tyne
NE5 4PB

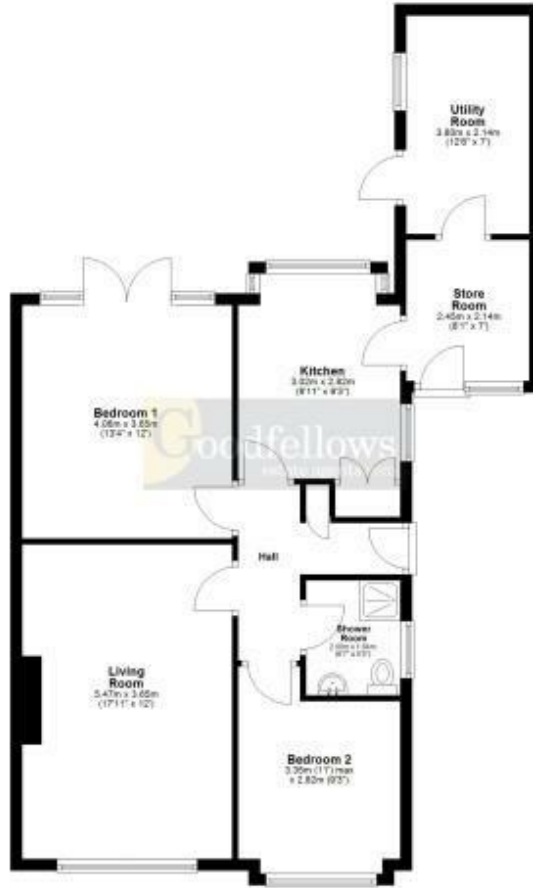


Asking Price
£225,000

2 bedroom semi detached bungalow situated within a cul-de-sac with a modern kitchen and shower room, large utility room, driveway and enclosed rear garden. Gas central heating and sealed unit double glazed windows.



Ground Floor
Approx. 78.6 sq. metres (845.6 sq. feet)



Total area: approx. 78.6 sq. metres (845.6 sq. feet)

Whilst every attempt has been made to ensure the accuracy of the floor plan contained here, measurements of doors, windows, rooms and any other items are approximate and no responsibility is taken for any error, omission, or mis-statement. The Plan is for illustrative purposes only. Version 1

Plan produced using PlanUp.

Energy Efficiency Rating		Current	Potential
<i>Very energy efficient - lower running costs</i>			
(92 plus) A			
(81-91) B			
(69-80) C		71	78
(55-68) D			
(39-54) E			
(21-38) F			
(1-20) G			
<i>Not energy efficient - higher running costs</i>			
England & Wales	EU Directive 2002/91/EC		

EPC Rating: C
Council Tax Band: B

DIRECTIONS

CONTACT

128 The Roman Way
West Denton
Newcastle upon Tyne
NE5 5AD

E: westdenton@goodfellowsestateagents.com

T: 0191 2677500

<https://www.goodfellowsestateagents.com/>

Goodfellows
estate agents.com